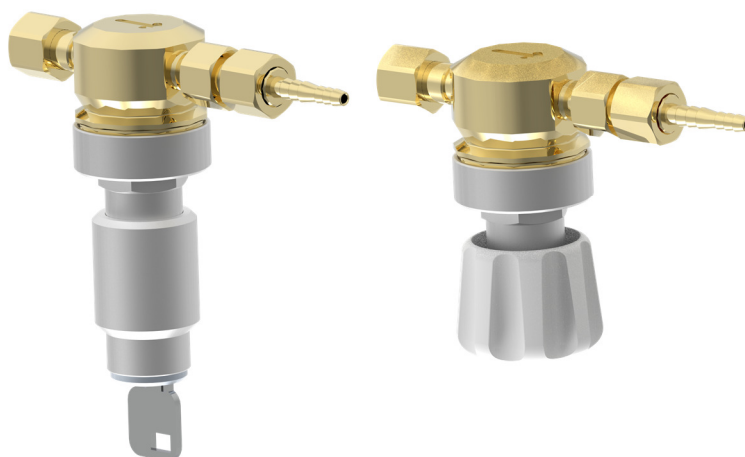


Optimizer for integration



Product features

This product offers a combination of compactness, durability and versatility to meet various needs and requirements.

- **Compact design:** Optimized to take up minimal space and fit in different environments.
- **Integration compatibility:** Easy to integrate into existing systems for increased flexibility.
- **Versatile:** Versatile usage for different applications and requirements.
- **Compact installation:** Simple and smooth installations for quick commissioning.
- **Durable construction:** Built to withstand demanding environments and working conditions.
- **Regulator compatibility:** Compatible with various regulators for easy adaption and use.
- **Efficient gas usage:** Optimized for efficient gas usage for cost savings and environmental consideration.
- **Improved welding quality:** Contributes to improved welding quality for enhanced performance and reliability.
- **Lockable option:** Also available as a lockable option with robust lock for extra security and protection.

Technical data

Type	1-stage / integration
Gas	Ar/mix
Temperature range	-20°C up to +60°C

Pressure / Flow

Inlet pressure P_1	Max 20 bar
Outlet pressure P_2	Depending on flow 0,2-1 bar
Q_n	0-115L/min

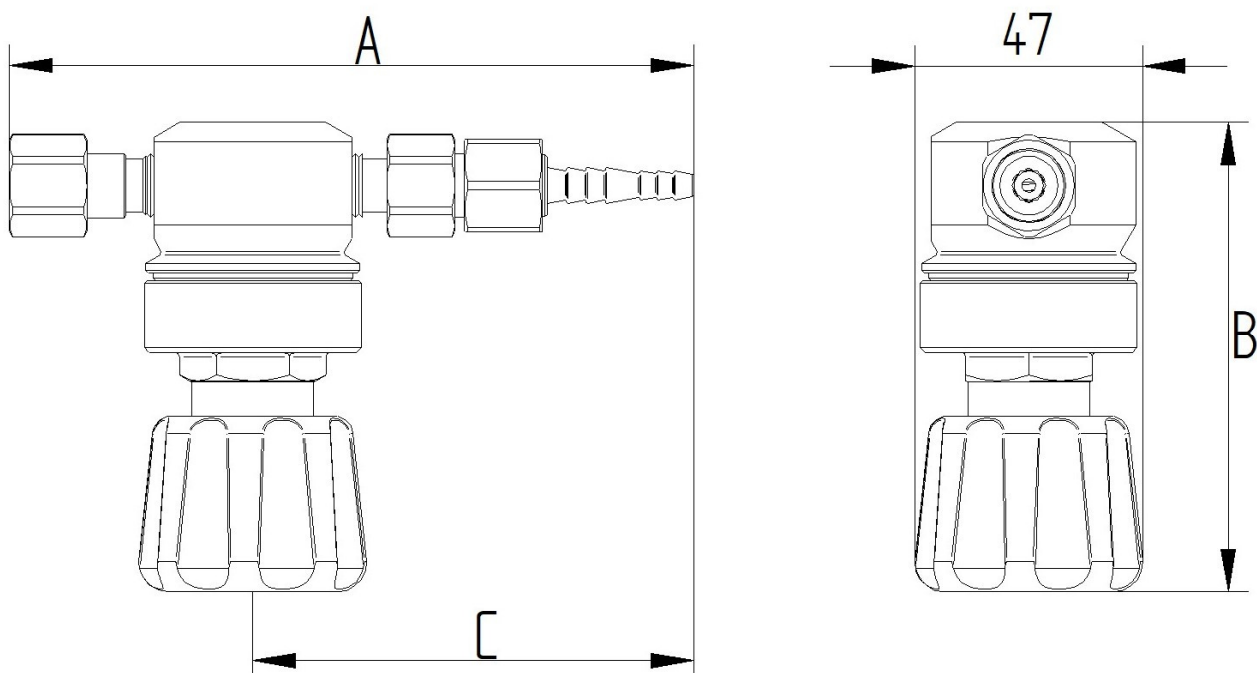
Materials:

Valve body	CW 614N
Diaphragm	NBR
Valve cap	Aluminum EN 6026
Hand wheel	ZINK, ZP0410

Connections:

Inlet	See page 2
Outlet	See page 2

Dimensions



Handwheel				
Inlet	Outlet	A	B	C
G3/8" F	G3/8"	134mm	96mm	84mm
G1/4" L F	G1/4"	136mm	96mm	82mm
Qc EN 561 F	Qc EN 561 M	123mm	96mm	58mm

Lockable				
Inlet	Outlet	A	B	C
G3/8" F	G3/8"	136mm	117mm	86mm
G1/4" F	G1/4"	134mm	117mm	80mm
Qc EN 561 F	Qc EN 561 M	123mm	117mm	58mm